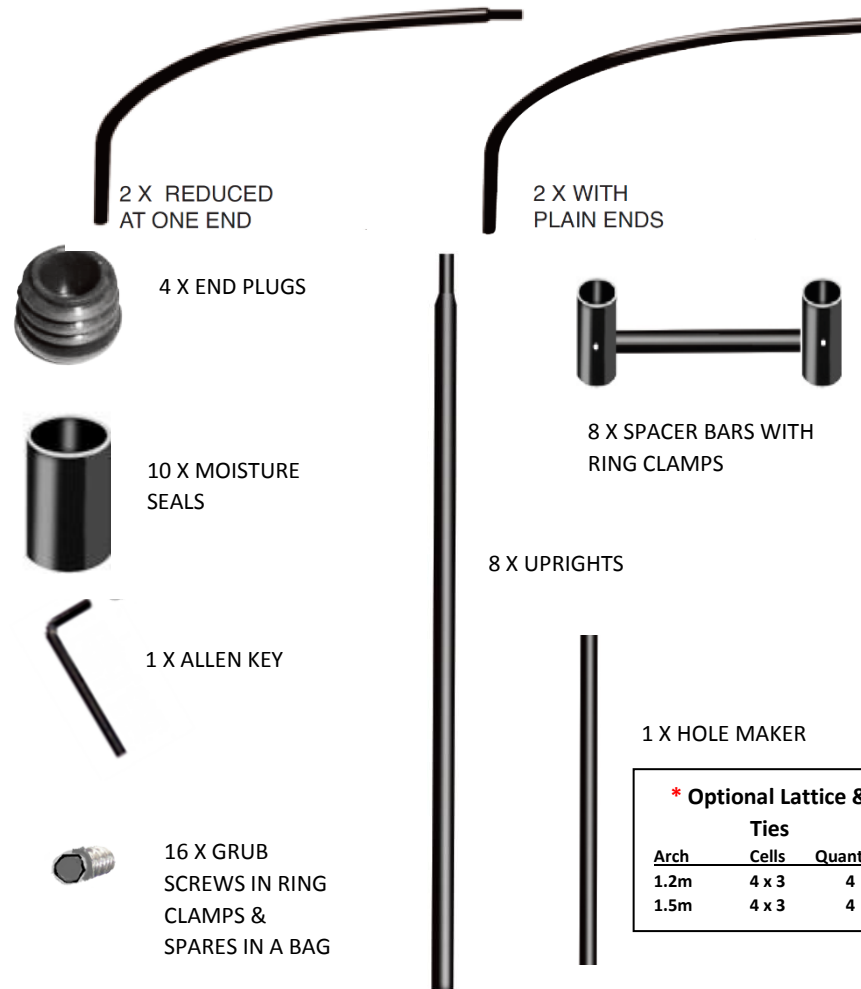


## PARTS LIST

In the unlikely event you are missing any components please call 0117 934 1790 and state the name of the product, size and description of the item. i.e. Classic Monet Arch Matt Black 1.2m, End Plug.

### MONET ARCH CURVES

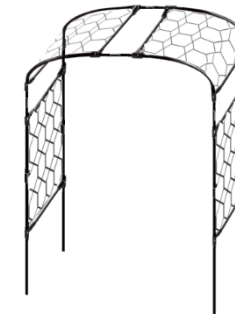


# Agriframes™

## Assembly Instructions for Classic Monet Arch

### Matt Black

Product Code: 30134-TBK & 30135-TBK



Please read the assembly instructions carefully prior to construction.

#### Tips:

##### **Positioning of the Spacer Bars**

In many cases the position of the Spacer Bars is down to personal preference. However, if you have the lattice option you will need to leave the correct distance between bars.

On the bottom section the Spacer Bars need to be at least 3 inches above the base of the tube.

#### Tips:

##### **Spacer Bars**

Before positioning the Spacer Bars on the uprights, half screw in the grub screws to the ring clamps on the spacer bars, to reduce the risk of losing the screws. Once correctly positioned tighten the grub screw to secure the spacer bar to the uprights.

##### **Lattice Panel Option**

For illustrative purposes we have only shown one side fixed with the lattice panels. Attach panels to both sides as you proceed.

#### Issues:

If you are experiencing any issues with your Agriframes product please contact our customer services team on 0117 934 1790 and quote your order reference.

**WARNING**, Contains small parts, tools and plastic bags. Keep children away until the unit is assembled and everything is cleared away.

**NOTE** the card, paper sack, and polythene bags are recyclable - please dispose of carefully.

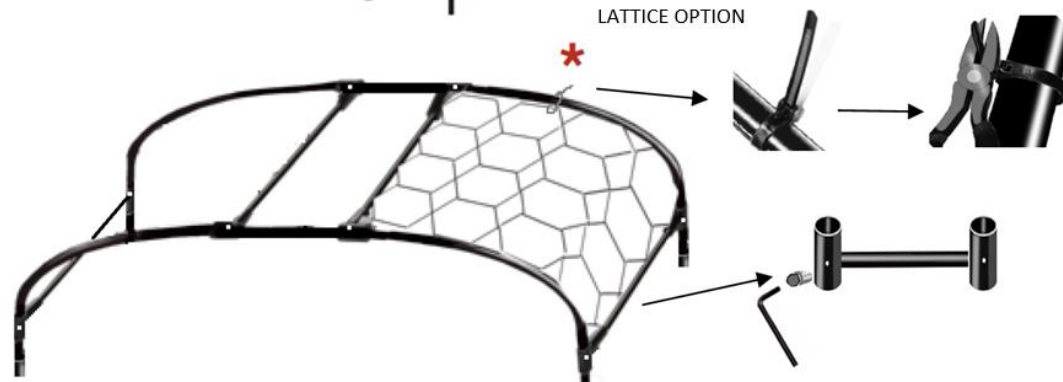
**MISSING PARTS PROCEDURE**, please call our customer service team on 0117 934 1790 and quote your order reference and quote the missing part. *E.g. ASO-----, 2 uprights missing.*

**AGRIFRAMES**, Journal House, Hartcliffe Way, Bristol, BS3 5RJ

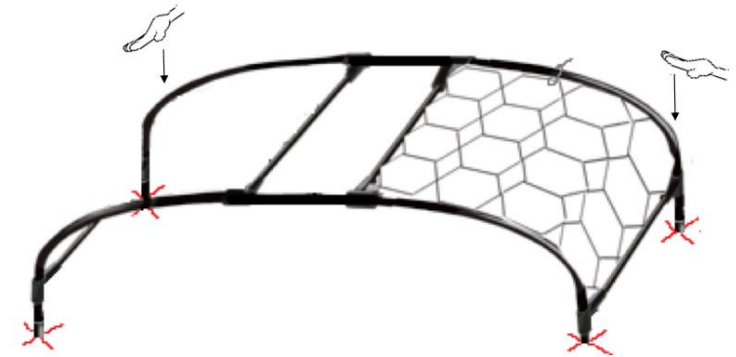
**ORDERS**(0)117 934 1790 **FAX** + (0)117 934 1791 **ORDER ONLINE** [www.agriframes.co.uk](http://www.agriframes.co.uk)

# CLASSIC MONET ARCH - MATT BLACK

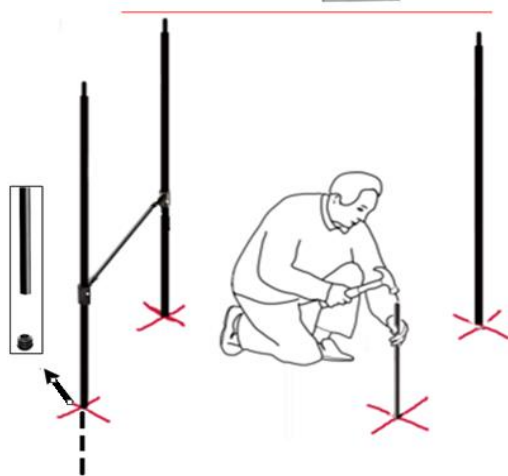
STEP 1  \* LATTICE INFILL 



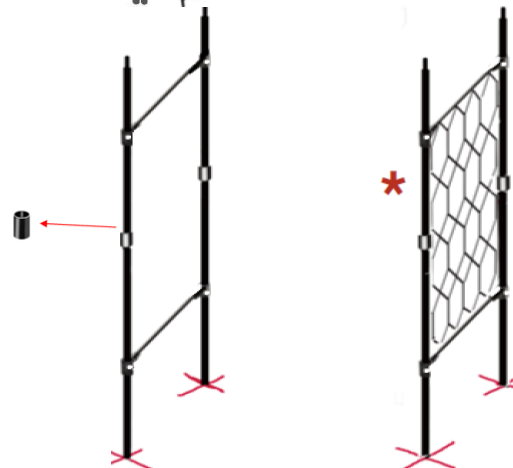
STEP 2 



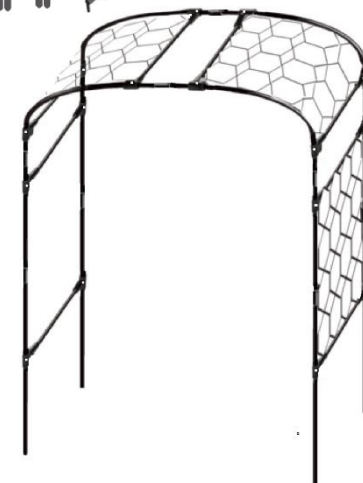
STEP 3 



STEP 4  \*



STEP 5 



\* ONLY FOR ORDERS WITH LATTICE PANELS. PANELS CAN BE ORDERED FROM [www.agriframes.co.uk](http://www.agriframes.co.uk)

# Assembly Instructions for Classic Monet Arch - Matt Black

Please read these instructions carefully.

**Assembly requires:** a Rubber Mallet, an Allen Key (provided), a ladder, spirit level and a tape measure.

## Step 1:

- Before assembly check Spacer Bars to ensure the grub screws are inserted into the holes on the ring clamps.
  - Loosen these grub screws ½ way out of the hole, to ensure when the ring clamps are moved into position the grub screw does not scratch the outer coating of the metal.
- Connect the Monet arch curves (insert the reduced end into the plain ended curve) and cover the joints with moisture seals.
- Slide the spacer bars on both sets of Monet curves and tighten the grub screws until the spacer bars are secured into place on the curves.

### **Positioning of the horizontal bar**

In many cases the position of the horizontal bars is down to personal preference. However, if you have the lattice option you will need to leave the correct distance between bars.  
On the bottom section the spacer bars need to be at least 3 inches above the base of the tube.

- **Attach the lattice using the cable ties, once the ties are secured trim the excess.**

## Step 2:

- Once the top of the arch has been completed move the structure to where it will be installed and, firmly push the top of the arch into the ground to make an impression, indentation or mark where the uprights should be placed. Then remove the top structure and check that the marks can clearly be seen.

## Step 3:

- Using the hole-maker make a hole 30cm into the ground, where you have marked or indented the ground in step 1, ensure that the holes are vertical and to the same depth.
- Insert the end plugs into the non-reduced ends of 6 uprights and insert these uprights into the hole in the ground, with the end plugs facing downwards.
- Slide a moisture seal over the reduced end of the poles and then connect the remaining 6 uprights. Cover the join between the poles with a moisture seal.
- The slide on the bottom spacer bars.

## Step 4:

- Slide over the remaining spacer bars onto the top of the uprights, then tighten the grub screws.
  - If you have chosen the lattice option you will need to position the lower Spacer Bars approximately 14" above the ground.
  - If you are not using lattice the positioning of the Spacer Bars can be adjusted to suit, however there needs to be two Spacer Bars on each set of uprights and two Spacer Bars on the curve to ensure that the structure is stable.
- **Attach the lattice using the cable ties, once the ties are secured trim the excess.**

**Step 5:**

- Lift the constructed Arch top onto the uprights, cover the joins with moisture seals.
  - You will need at least 2 people for this step due to the weight of the Arch top.

**If you have any questions regarding assembly please call our customer service team on 0117 934 1790**